



CENTROID™

CNC
Rotary Tables

Can Your Rotary Table Do This?



Centroid's Rotary tables let you make parts that can't be made with an indexer. Centroid's rotary tables combine the speed of an indexer with the power of a true interpolated 4th axis rotary table. The rotary axis is under program control and can be moved simultaneously with X, Y, and Z axes. You can even program the rotary table with Intercon, Centroid's easy-to-use conversational software, just like you would any other axis. Intercon also lets you specify rotary table movement by decimal degrees OR degrees, minutes, seconds. It will even convert between the two for you. Separate dedicated Jog buttons and MPG handwheel operation let you set up rotary axis parts quickly and easily.

MCS #1 (G54)	Current Position (inches)
X	+3.5000
Y	+2.7430
Z	-0.2350
B	+0.2500

*DRO Shows Rotary Axis(B) in
Decimal Degrees*

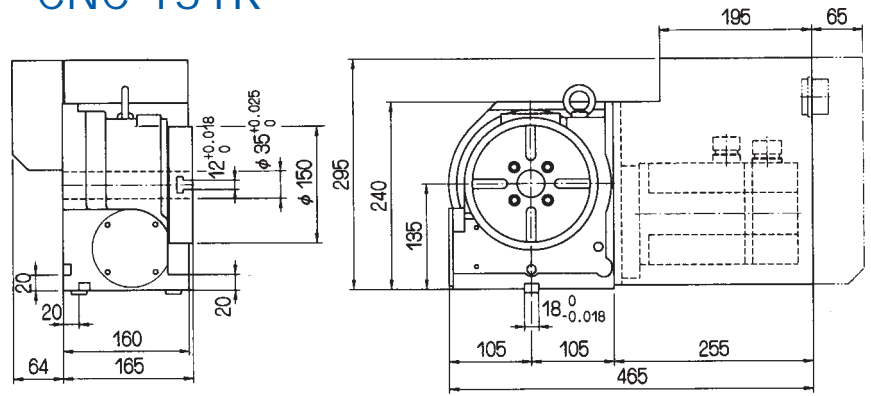


CNC-201 Rotary Table

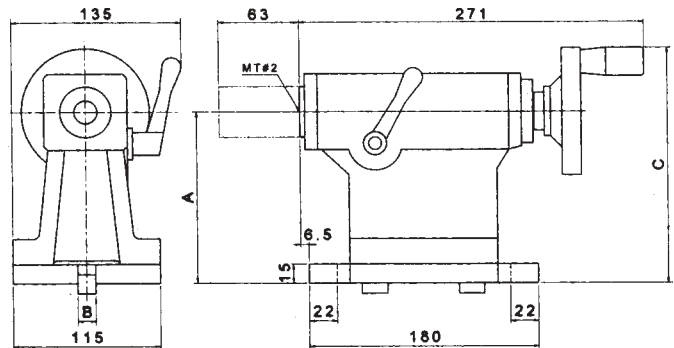
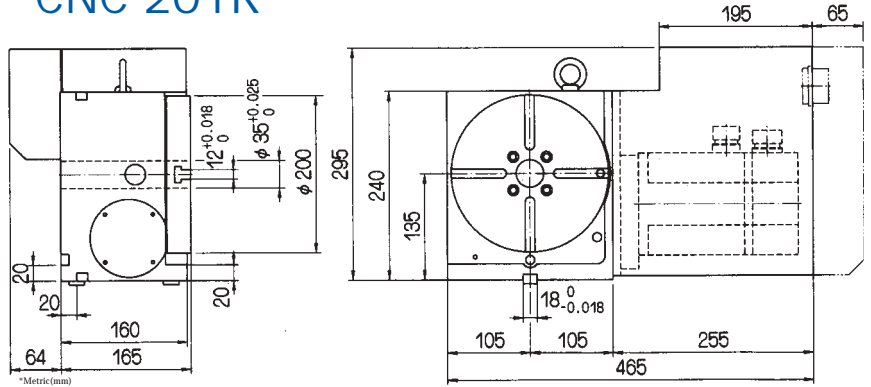
Table Specifications

ITEM / MODEL	CNC-151R	CNC-201R
Table Dia (mm/inch)	150/5.9	200/7.87
Center Height in Vertical (mm/inch)	135/5.31	135/5.31
Table Height in Horizontal (mm/inch)	165/6.5	165/6.5
Overall Height in Vertical without Motor Cover (mm/inch)		
Motor Cover (mm/inch)	240/9.45	240/9.45
Thru-Hole Dia (mm/inch)	35 ^{H7} /1.37 ^{H7}	35 ^{H7} /1.37 ^{H7}
Width of T-slot (mm/inch)	12 ^{H7} /0.47 ^{H7}	12 ^{H7} /0.47 ^{H7}
Width of Guide Block (mm/inch)	18 ^{H7} /0.71 ^{H7}	18 ^{H7} /0.71 ^{H7}
Gear Ratio	1:90	1:90
Min. Indexing Unit degree (degree)	0.001°	0.001°
Max. R.P.M. (rpm)(motor: 2000/rpm)	22.2	22.2
Pneu. clamp force (kgim)(P:5kg/cm ²)	25	25
Hydro clamp force (kgim)(P:20kg/cm ²)	50	50
Indexing Accuracy Class (sec.)	A - 25i S - 50i	A - 25i S - 50i
Repeatability (sec.)	± 2i	± 2i
Max Machining Force (kgim)	23	23
N.W. (kgs)	70	84
Max. Load		
Vertical	W=75 kg	W=100 kg
Horizontal	W=150 kg	W=200 kg
Max. Radial Load		
	F=800 kg	F=822 kg
	FxL=11.2 kgim	FxL=13 kgim
	FxL=40 kgim	FxL=50 kgim
Max. Working Inertia	4.08 kgicm ²	10.2 kgicm ²
Spindle Drive Torque	9 kgim	9 kgim

CNC 151R



CNC 201R



MODEL	A	B	C	Center Taper	Suitable Rotary Table
TSA-530	135	18	185	MT#2	CNC-151R, 201R

**All charts are in metric



Distributor

Machines in Motion
993 Carbon Canyon Rd.
Chino Hills, CA 91709
714 528-7061
www.cnc-machine-controls.com



CENTROID™
159 Gates Rd.
Howard, PA 16841
(814) 353-9256 Sales
(814) 353-9265 Fax
www.centroidcnc.com