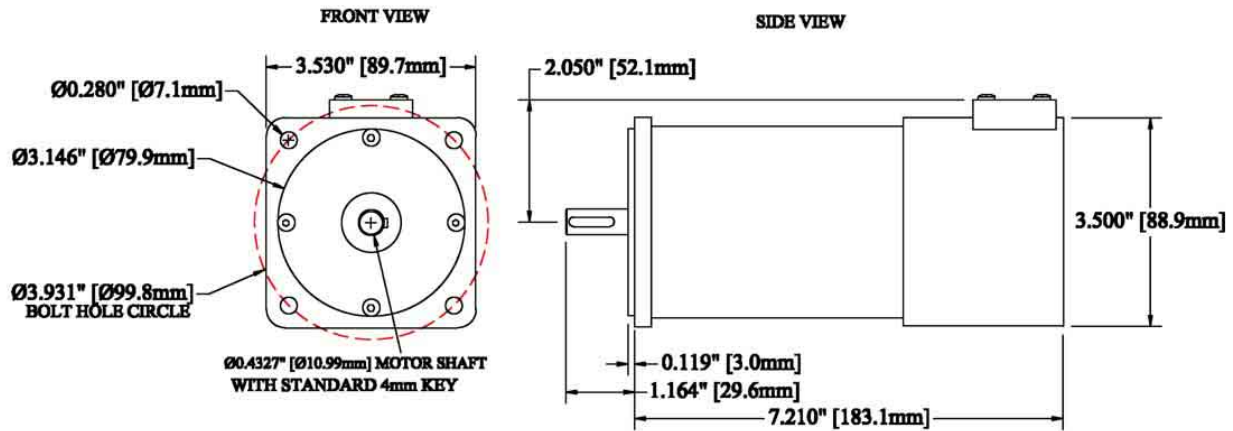


## TB150 – Centroid Motor Dimensions

### Overview:

This document will help you in the process of knowing the exact measurements of the Centroid motors used. Many times you may need more detail as to how and where motors should be installed and how they will connect to the control. This is extremely helpful when you do not have the motor with you at the time of making cutouts.

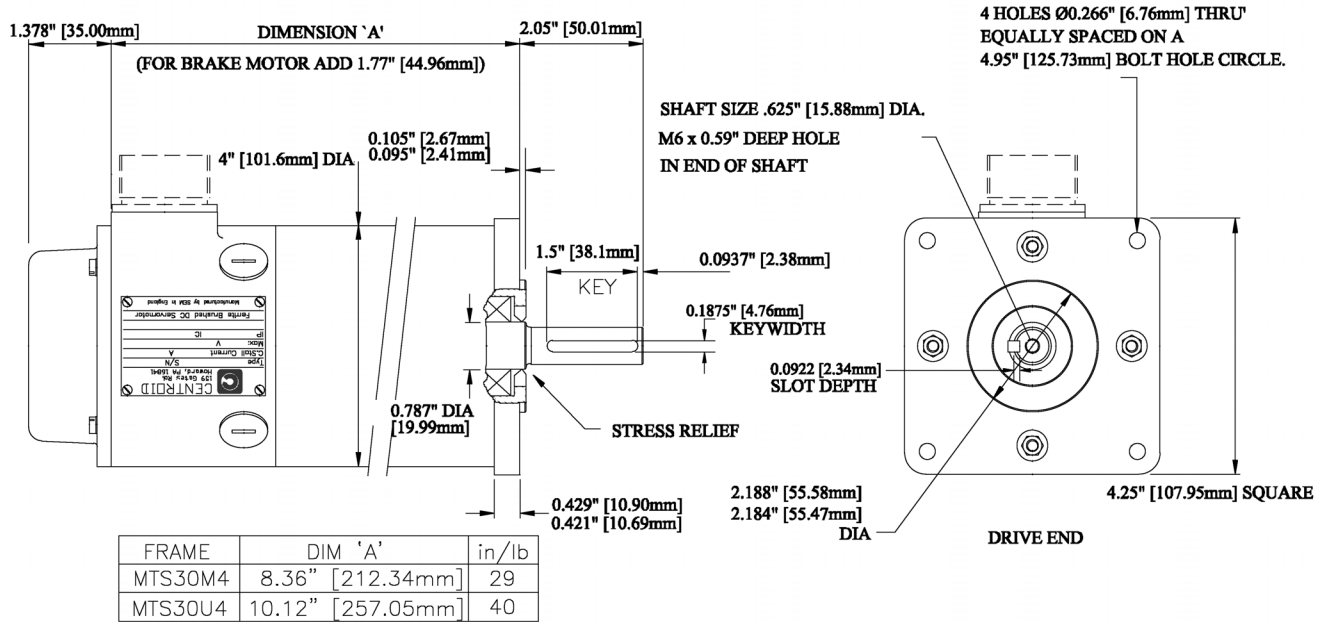
### 17 inlb DC motor diagram:



### 17 in-lb Servo Motor

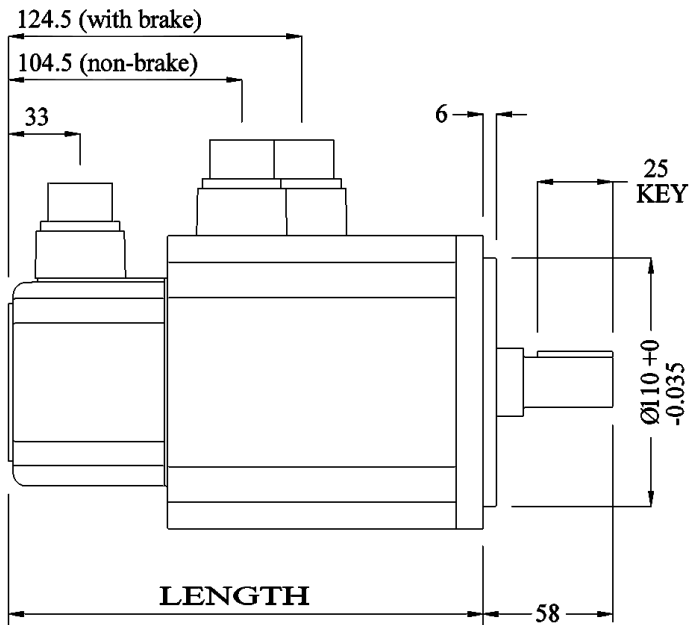
## 29 and 40 inlb DC motor diagram:

ALL DIMENSIONS IN INCHES

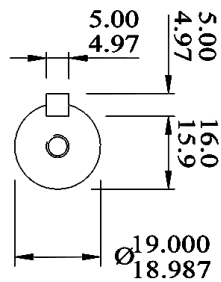
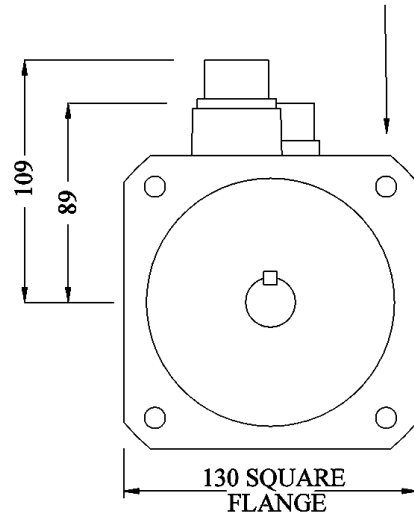


CENTROID MOTOR DIMENSIONS

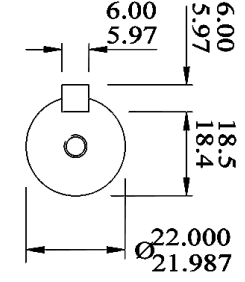
**400W, 750W, 1KW and 2KW AC motor diagrams:** 1KW and 2KW are listed on top. The 1KW is 'A' and the 2KW is 'B'. The 400W is listed below. All dimensions are listed in millimeters only.



4 HOLES Ø9mm  
EQUI-SPACED ON 145 BC DIA.

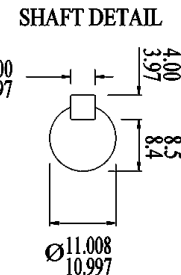
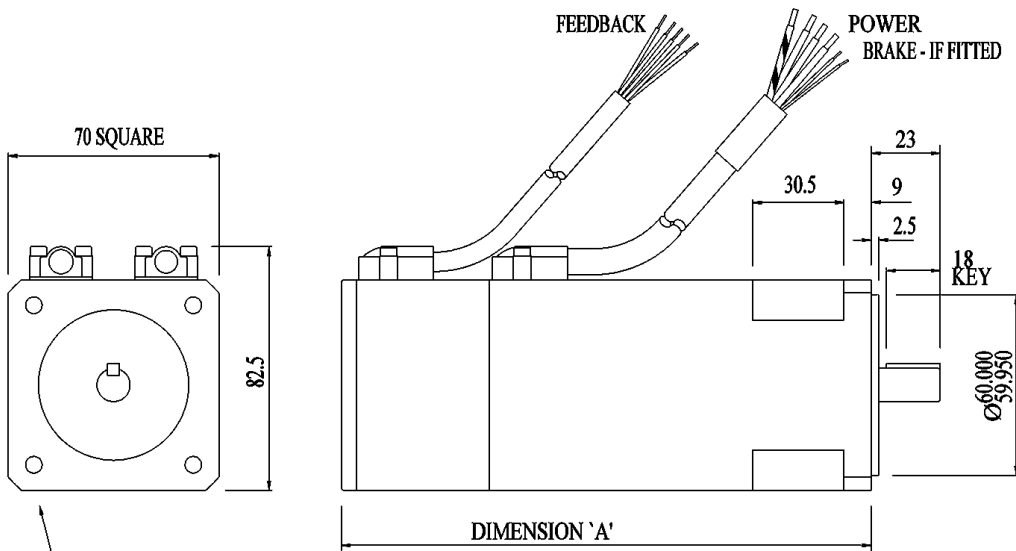


SHAFT END  
DETAIL 'A'



SHAFT END  
DETAIL 'B'

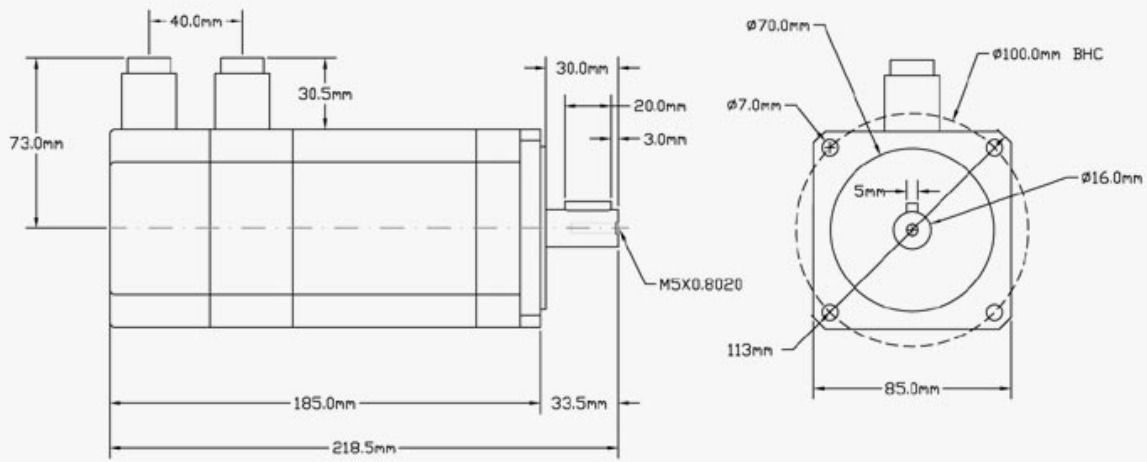
FRAME	KW	LENGTH	SHAFT DETAIL
C	1.0	216	DETAIL 'A'
G	2.0	258	DETAIL 'B'



SHAFT DETAIL

4 FIXING HOLES FOR M5 CAP SCREWS  
EQUI-SPACED ON 75 PCD

FRAME	KW	DIMENSION 'A'	
		NO BRAKE	WITH BRAKE
70A	0.4	149	176



# LD-85 750 WATT MOTOR

MAT: N/A			
REV:			
SCALE: N/A	BY: TRW	REVISED: 03/31/03	
FILE: LD-85		TDR:	

**CENTROID CORPORATION**

LD-85 750 MOTOR